

CATÁLOGO Accesorios





Boquilla de 1.5 en Bronce



Boquilla de 1.5 en Policarbonato



Boquilla Extintor Petrolero



Boquilla Extintor de 150 Americano

CATÁLOGO ACCESORIOS



Cornetas CO2 Asiáticos



Cornetas de CO2



Hacha Pico 4.5 Lb



Manguera Extintor Agente Limpio

CATÁLOGO ACCESORIOS



Manguera Extintor Polvo Químico



Manguera Extintor Tipo D



Manguera Extintor Tipo K



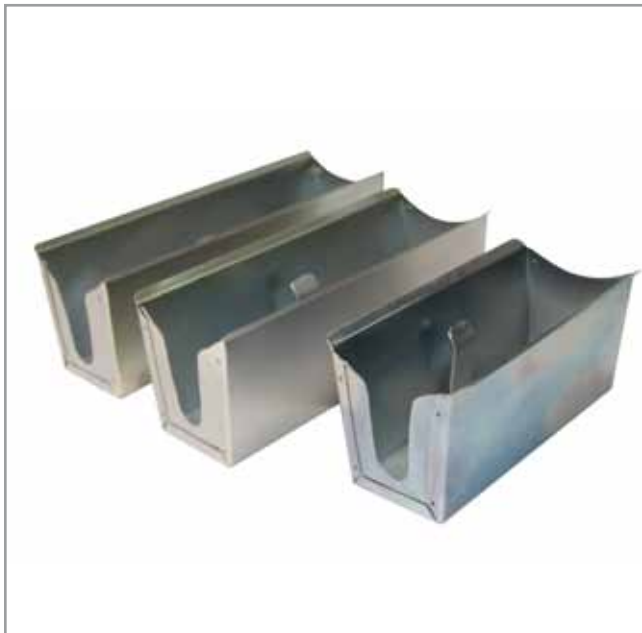
Manguera Water Mist o Agua Pulverizada



Manguera Extintor Petrolero



Manómetros para Extintor Portátil



Porta Cápsulas Extintor Petrolero



Porta Tubos en Bronce

CATÁLOGO ACCESORIOS



Rueda Giratoria Extintor 150 Lb



Rueda Extintor de 150 Lb



Soporte Canastilla para Manguera



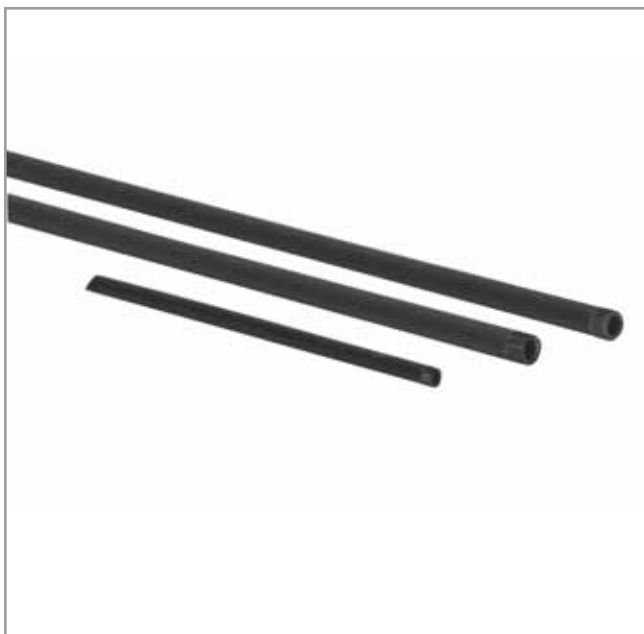
Soportes de Vehiculo



Tapa Extintor Carretilla



Tubo Sifón Aluminio



Tubo Sifón Plástico



Válvula 7/8



Válvula 30 mm



Válvula Extintor 150 Presurizado



G100 (Front)



G100 (Side View)



293266K (Front)



293266K (Side View)



PG009RC (Front)



PG009RC (Side View)



G100H (Front)



G100H (Side View)



G100WS (Front)



G100WS (Side View)



GWRENCH

GAUGES

DRY CHEMICAL GAUGES

UL listed.

P/N	DESCRIPTION
G100	100 lb Dry Chemical Gauge
G125	125 lb Dry Chemical Gauge
G150	150 lb Dry Chemical Gauge
G175	175 lb Dry Chemical Gauge
G195	195 lb Dry Chemical Gauge
G235	235 lb Dry Chemical Gauge
G240	240 lb Dry Chemical Gauge
G350	350 lb Dry Chemical Gauge
G360	360 lb Dry Chemical Gauge

DRY CHEMICAL GAUGES

Kidde. UL listed.

P/N	DESCRIPTION
293789K	100 lb Kidde Dry Chemical Gauge
293266K	195 lb Kidde Dry Chemical Gauge
259535K	Kidde Gauge O-Ring (Plastic Valve)
259053K	Kidde Gauge Clip

One Required for Each Gauge

DRY CHEMICAL GAUGES

RC Ind. UL listed.

P/N	DESCRIPTION
PG009RC	195 lb RC Ind. Dry Chemical Gauge
OR7	O-Ring for RC Ind. Gauge

HALON GAUGES

UL listed.

P/N	DESCRIPTION
G100H	100 lb Halon Gauge
G125H	125 lb Halon Gauge
G150H	150 lb Halon Gauge
G195H	195 lb Halon Gauge

WATER-BASED EXTINGUISHER GAUGES

UL listed.

P/N	DESCRIPTION
G100WS	100 lb Water, Foam & Loaded Stream Gauge
G100K	100 lb Wet Chemical Gauge

Steel **GAUGE WRENCH** is designed specifically for removing and attaching most gauges. Cold-rolled, plated steel, 1/16" thick.

P/N	DESCRIPTION
GWRENCH	Gauge Wrench

VALVE STEMS

DRY CHEMICAL VALVE STEMS

Amerex. Pkg/5 (priced each).

P/N	DESCRIPTION
6092A	Amerex Valve Stem ♦
6093A	Amerex Valve Stem ♦



DRY CHEMICAL VALVE STEMS

Ansul.

P/N	DESCRIPTION
ASVS4	Ansul Style Sentry Valve Stem ♦
415202AS	Ansul Sentry Valve Stem ♦
ASVS5	Ansul Style Sentry Valve Stem ♦
429099AS	Ansul Sentry Valve Stem (DC & FE36)
428431AS	Ansul Sentry Valve Stem



DRY CHEMICAL VALVE STEMS

Badger™. Pkg/5 (priced each).

P/N	DESCRIPTION
12426B	Badger Valve Stem ♦
19010B	Badger Valve Stem ♦
23389B	Badger Valve Stem ♦



DRY CHEMICAL VALVE STEMS

Buckeye. Pkg/5 (priced each).

P/N	DESCRIPTION
103215W	Buckeye Valve Stem ♦
WVS13	Buckeye Valve Stem (100214)
WVS15	Buckeye Valve Stem (106215)



DRY CHEMICAL VALVE STEMS

Flag and Fyr-Fyter.

P/N	DESCRIPTION
552144FG	Flag Valve Stem (old 429538AS) ♦
552143FG	Flag Valve Stem (old 552013FG) ♦
FVS19	Fyr-Fyter Valve Stem (125558)
FVS21	Fyr-Fyter Valve Stem (109438)
FVS22*	Fyr-Fyter Valve Stem (108097)

*WHILE QUANTITIES LAST!





DRY CHEMICAL VALVE STEMS

Kidde.

P/N	DESCRIPTION
440020K	Kidde Pro-Line Valve Stem ♦
440068K	Kidde Valve Stem ♦
877546K	Kidde Valve Stem ♦
KVS46	Kidde Valve Stem (843704)
KVS47	Kidde Valve Stem (844210)



DRY CHEMICAL VALVE STEMS

Pemall, Power-Pak, Pyronauts and RC Ind.

P/N	DESCRIPTION
L4PA	Pemall Valve Stem ♦
S4PA	Pemall Valve Stem (S4) ♦
PVS50	Power-Pak Valve Stem (9993500)
PNV551	Pyronauts Valve Stem (106)
RCV554	RC Ind. Valve Stem (LR006)



DRY CHEMICAL VALVE STEMS

Safety 1st, Stop Fire and Strike 1st.

P/N	DESCRIPTION
XVS56*	Safety 1st Valve Stem (200346)
YVS57	Stop Fire Valve Stem (600037)
YVS58	Stop Fire Valve Stem (600076)
SFVS61	Strike 1st Valve Stem (161427)
110427SF	Valve Stem
161428SF	Valve Stem

*WHILE QUANTITIES LAST!



PRESSURIZED WATER VALVE STEMS

Pkg/5 (priced each).

P/N	DESCRIPTION
6093A	Amerex Valve Stem ♦
12426B	Badger Valve Stem ♦
FVS21	Fyr-Fyter Valve Stem (109438)
7328G*	General Valve Stem

*WHILE QUANTITIES LAST!



HALON VALVE STEMS

P/N	DESCRIPTION
6092A	Amerex Valve Stem ♦
6093A	Amerex Valve Stem ♦
ASVS4	Ansul Style Sentry Valve Stem ♦
ASVS5	Ansul Style Sentry Valve Stem ♦



HALON VALVE STEMS

Badger™ and Buckeye. Pkg/5 (priced each).

P/N	DESCRIPTION
18672B	Badger Valve Stem
103214W	Buckeye Valve Stem

HALON VALVE STEMS

Kidde, Pemall, RC Ind., Stop Fire and Strike 1st.

Pkg/5 (priced each).

P/N	DESCRIPTION
440007K	Kidde Valve Stem
L4PA	Pemall Valve Stem ♦
S4PA	Pemall Valve Stem ♦
RCV554	RC Ind. Valve Stem (LR006)
YV557	Stop Fire Valve Stem (600037)
SPV561	Strike 1st Valve Stem (161427)



CO₂ VALVE STEMS

Amerex, Ansul, Badger™, Buckeye and Fyr-Flyter.

Pkg/5 (priced each).

P/N	DESCRIPTION
1539A	Amerex Valve Stem
418682AS	Ansul CO ₂ Valve Stem
429154AS	Flag Valve Stem Assy
5558B	Badger Valve Stem
20981B	Badger Valve Stem
900321W	Buckeye Valve Stem

CO₂ VALVE STEMS

RS and Superior. Pkg/5 (priced each).

P/N	DESCRIPTION
418682AS	RS & Superior Valve Stem (P5970-21)

16 Best Sellers!

VALVE STEM KIT contains five each of our 16 best sellers, for a total of 80 valve stems. Comes in a handy clear storage box, with full-scale illustration of each valve stem.

P/N	DESCRIPTION	EACH
VSKIT	Valve Stem Kit	461.91
LPC16	Clear Parts Bin Box	11.55





PSH1



BHV100

CO₂ FIRE EXTINGUISHER VALVES for 1"-neck steel cylinders. See page 273 for replacement parts.

P/N	DESCRIPTION
BHV100	CO ₂ Valve w/ Latch
PSH1	CO ₂ Valve w/ Latch
EL250	PSH1 1/4" Elbow w/ Diffuser
EL375	PSH1 1/4" Elbow w/ Diffuser



3090A



EL10, EL5

CO₂ FIRE EXTINGUISHER VALVES for 1 1/8"-neck aluminum cylinders.

P/N	DESCRIPTION
3090A	CO ₂ Valve
EL10	1/4" Elbow w/ Diffuser For 10 - 20 lb 3090A Valves
EL5	Elbow for 3090A for 5 lb CO ₂ Cylinders
DCT	1/4" Brass Discharge Tube For 3090A w/ EL5



EL250

EL375



BA100

WHEELED UNIT VALVES for 50 - 100 lb CO₂ units.

P/N	DESCRIPTION
BA100	1" Handwheel Valve
BA100STEMD	BA100 Valve Stem
R55	BA100 Disc, Washer & Nut Assembly



CEV



CEVQR

WHEELED UNIT VALVES

P/N	DESCRIPTION
CEV	1/4" Nitrogen Valve w/ Gauge For Dry Chemical Wheeled Units
CEVDW	Safety Disc & Washer For CEV & CEVQR
CEVQR	1/4" Quick Release Nitrogen Valve w/ 3,000 psi Gauge For Dry Chemical Wheeled Units
CEVQR4	1/4" Quick Release Nitrogen Valve w/ 4,000 psi Gauge
CEVDW4	Safety Disc & Washer For CEVQR4
CEVSTEM	Lower Seat Stem for CEV
G3000	3,000 psi Replacement Gauge For CEVQR & 12467A



9895A



12467A

QUICK RELEASE VALVES

P/N	DESCRIPTION
9895A	1/4" Quick Release Valve For 50 - 100 lb CO ₂ Cylinders
12467A	1/4" T-Handle Quick Release Nitrogen Valve w/ Gauge
4000A	Safety Disc, Washer & Nut Assembly For 9895A